
Navigating Public Assistance

October 30, 2020

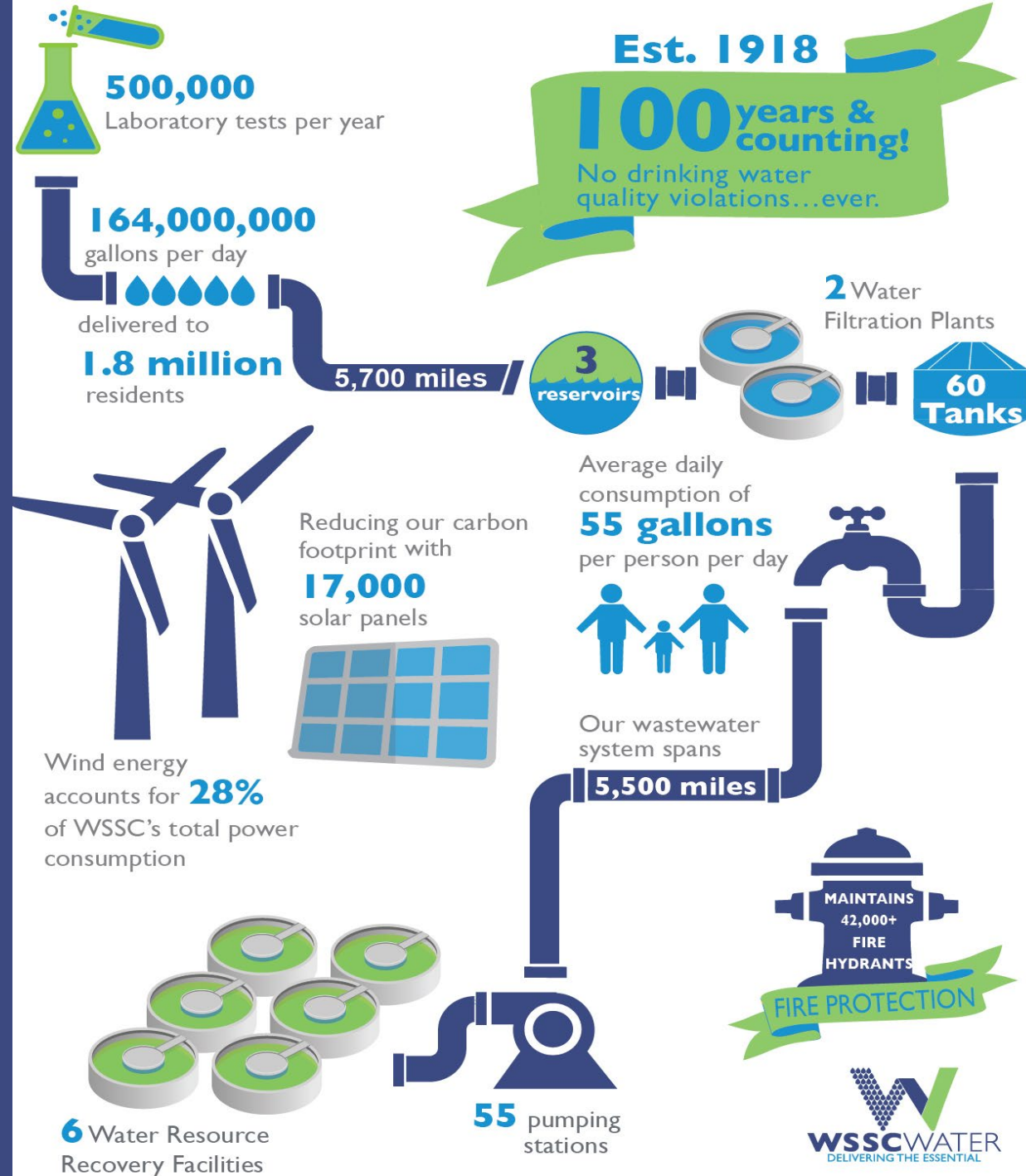
David McDonough, J.D.

Director of Police & Homeland Security



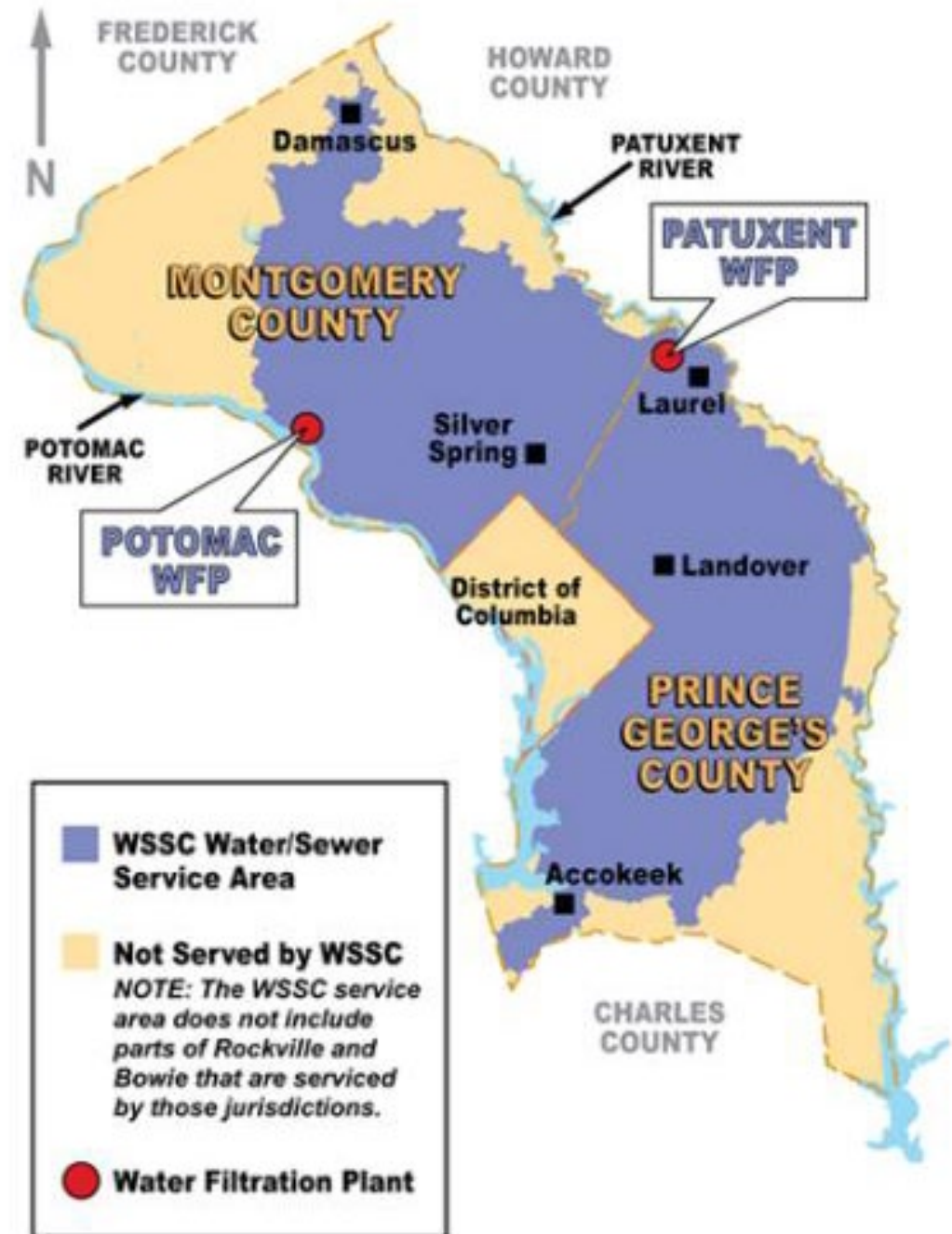
WSSC Water At-A-Glance

- 1.8 million people = 480,000 customer accounts
- 1,700 #H2O People (employees)
- 11,200 miles of pipeline
- 2 watersheds
- 2 Water Filtration Plants
- 6 Water Resource Recovery Facilities



Who we serve

- Spans nearly 1,000 square miles
- Serving 1.8 million residents
- 480K customer accounts
- Critical Customers include:
 - National Institutes of Health
 - 12 Hospitals
 - Pharmaceutical and Vaccine Manufacturing hub
 - FDA



Who am I?



Current

- Director of Police & Homeland Security
- COVID-19 Incident Commander

Previous

- Director of Administration at MEMA
- Director of Strategy & Policy at MEMA
- SEOC Commander
- Deputy in Governor's Office of Homeland Security

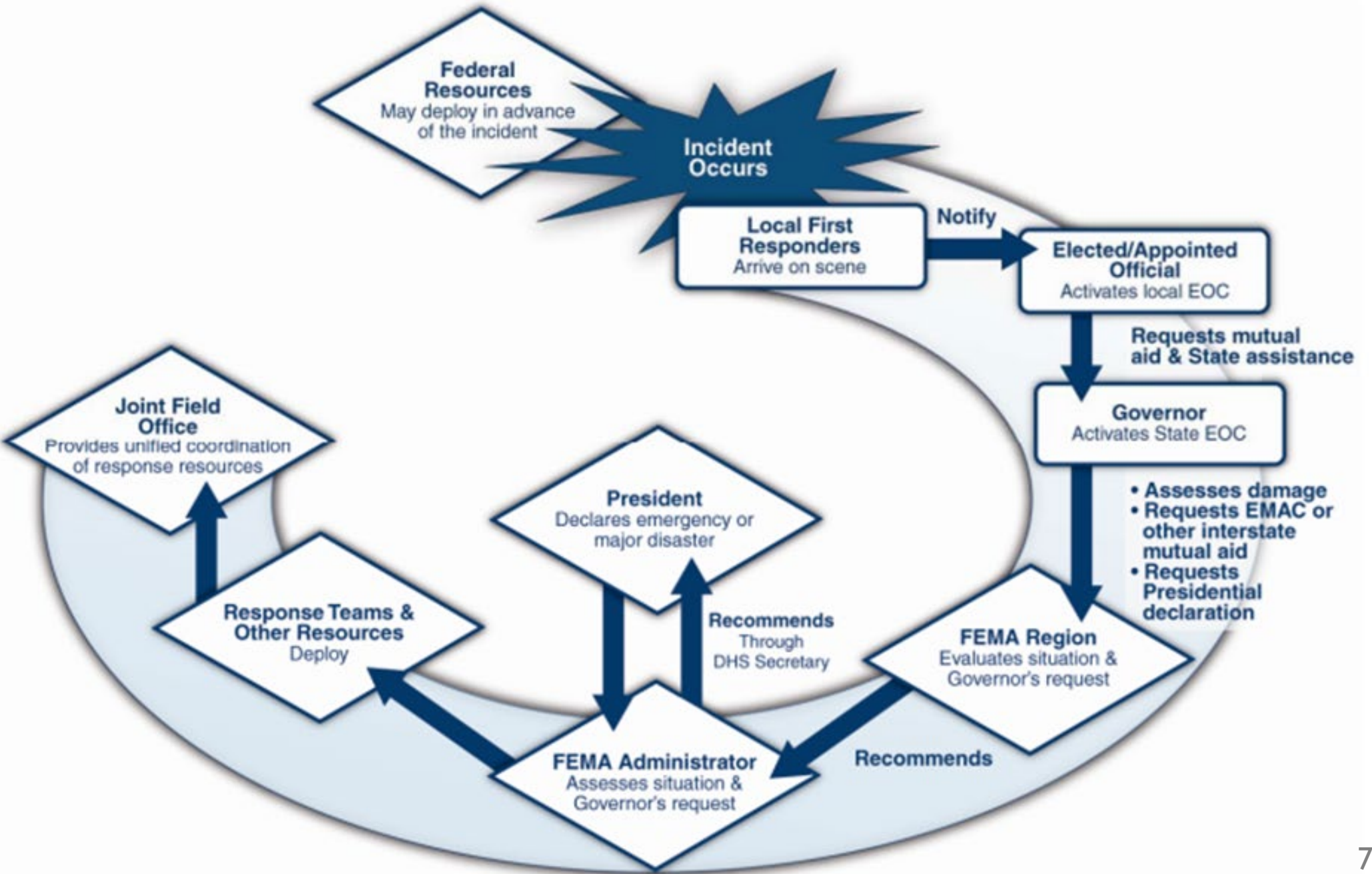
3 Takeaways

- Start Early and Support your Community
- Be Engaged with Incident Command and/or your Emergency Manager
- Avoid a “Second Disaster”

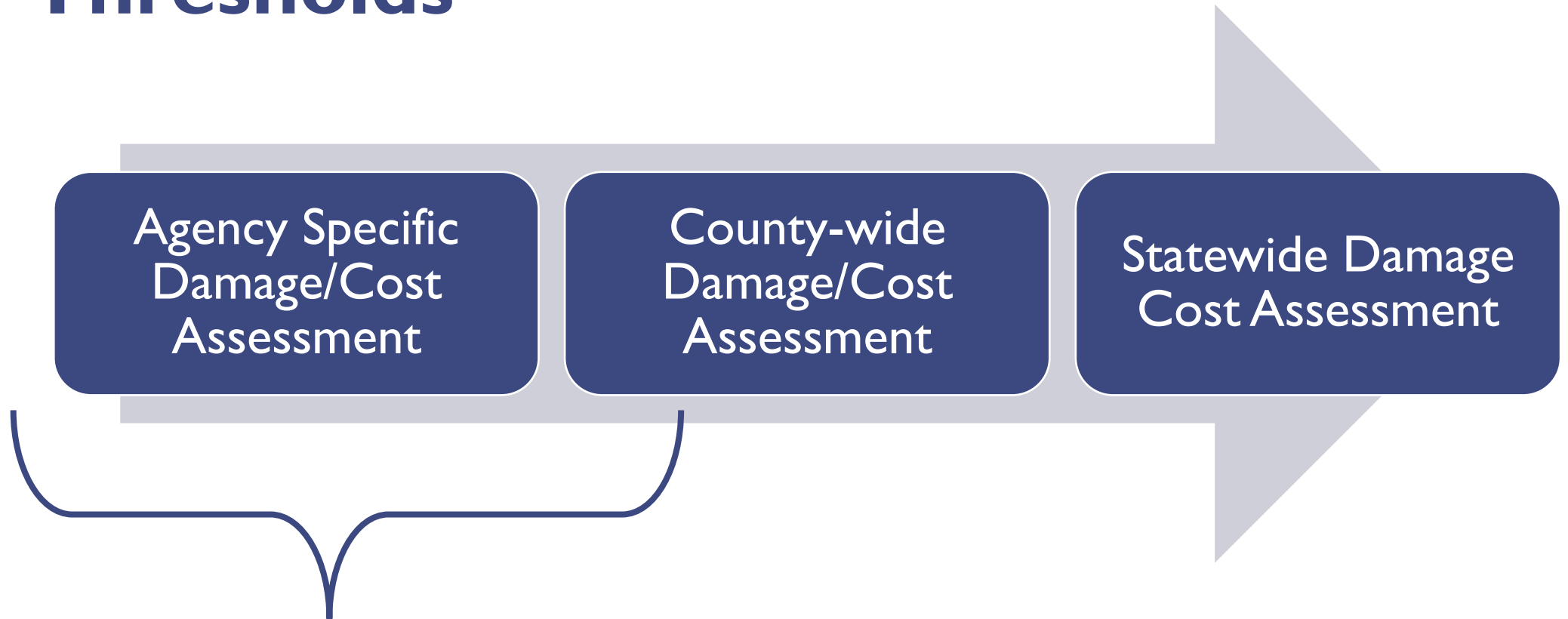
Start Early and Support your Community

The flowchart illustrates the Emergency Response Process, starting with an incident occurring. Local first responders arrive on scene and notify the Elected/Appointed Official, who activates the local EOC. The Governor then activates the State EOC, assessing damage and requesting mutual aid or EMAC assistance. The FEMA Region evaluates the situation and recommends action to the FEMA Administrator, who assesses the situation and Governor's request. The President declares an emergency or major disaster, recommending through the DHS Secretary. Response teams and other resources are deployed, providing unified coordination through the Joint Field Office. Federal resources may deploy in advance of the incident.

```
graph TD; IR[Incident Occurs] --> LFR[Local First Responders Arrive on scene]; LFR -- Notify --> EAO[Elected/Appointed Official Activates local EOC]; EAO -- "Requests mutual aid & State assistance" --> G[Governor Activates State EOC]; G -- "Assesses damage<br/>• Requests EMAC or other interstate mutual aid<br/>• Requests Presidential declaration" --> FR[FEMA Region Evaluates situation & Governor's request]; FR -- Recommends --> FA[FEMA Administrator Assesses situation & Governor's request]; FA --> P[President Declares emergency or major disaster]; P -- "Recommends Through DHS Secretary" --> FR; FA --> JFO[Joint Field Office Provides unified coordination of response resources]; JFO --> RTRD[Response Teams & Other Resources Deploy]; RTRD --> JFO; RTRD --> FA; FR --> P; P --> JFO; FR --> LFR; FR --> EAO;
```



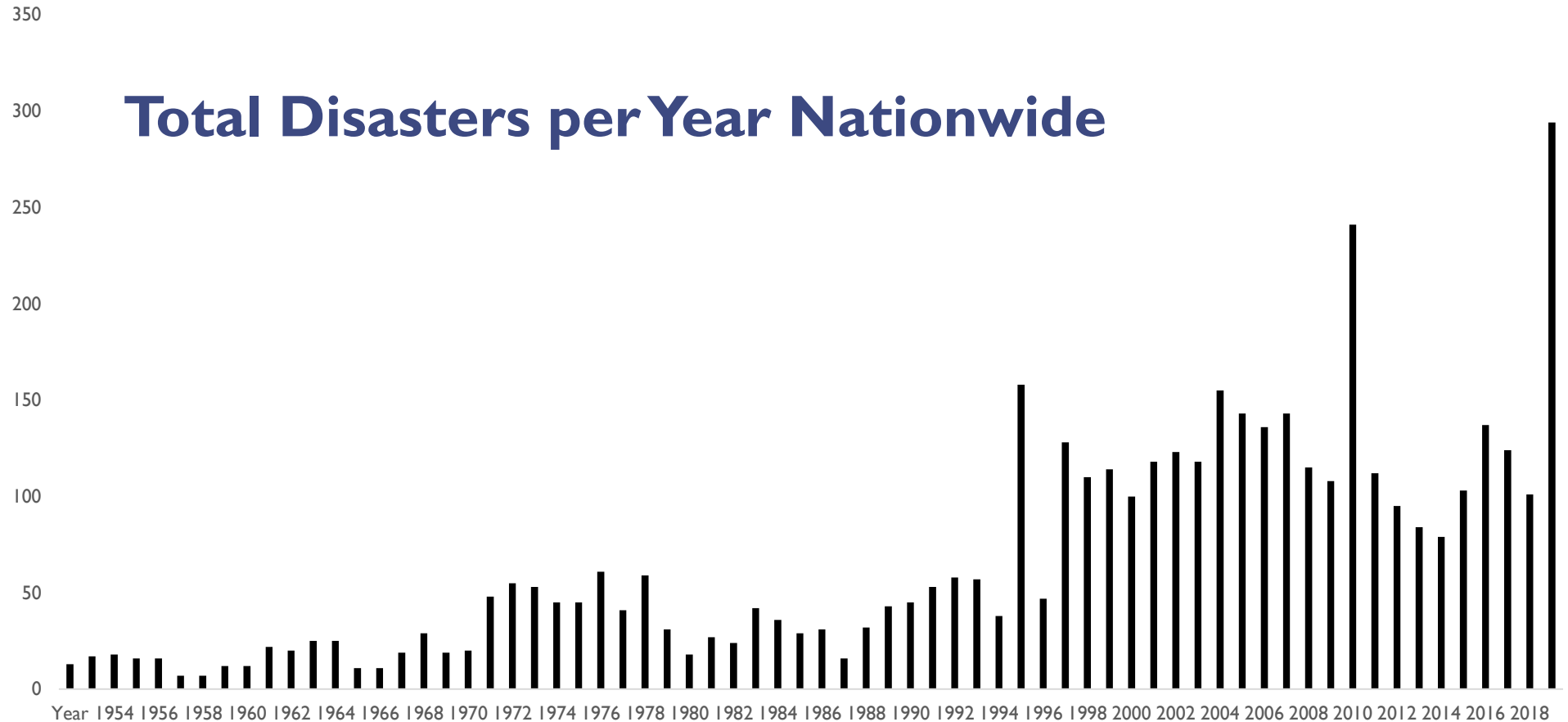
Gathering Verifiable Cost Data Quickly Helps Community and State Meet Thresholds



Your Costs Support both County and State threshold requirements

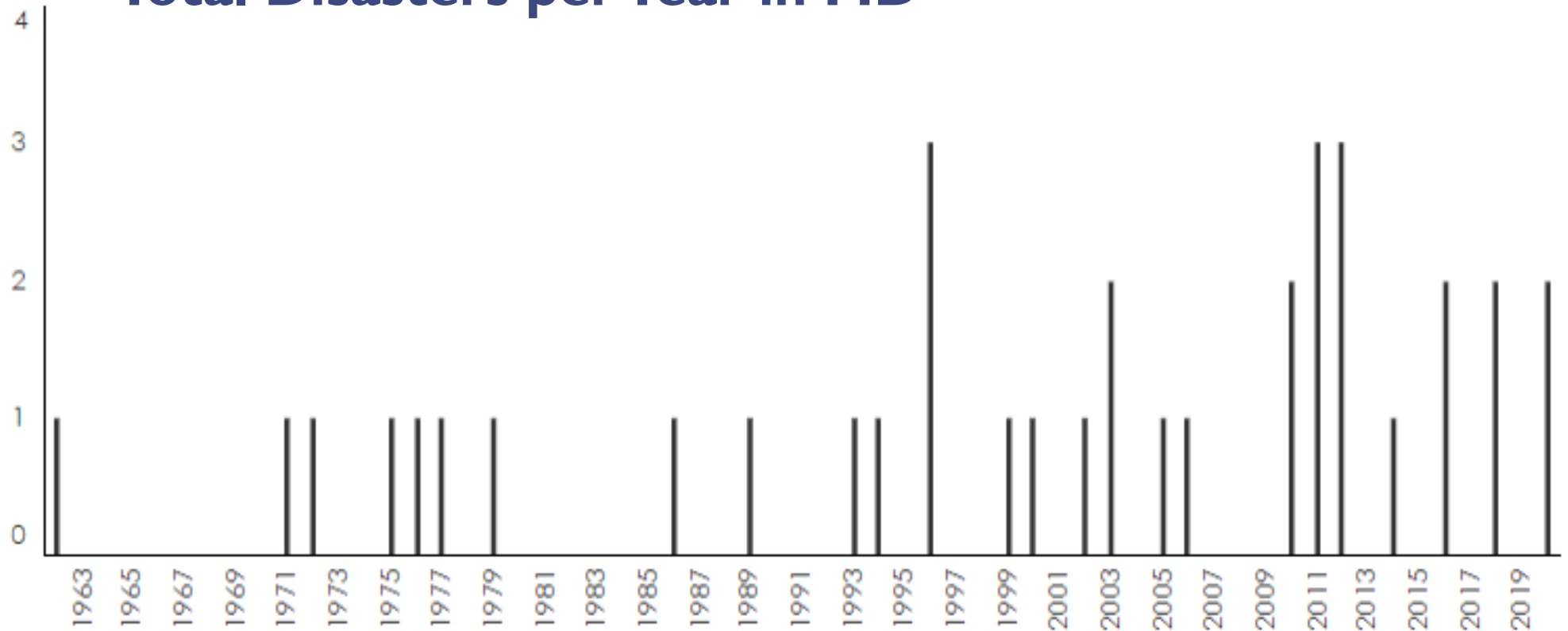
- \$1.50 per capita statewide
- \$3.78 per capita in each county

Disasters are Increasing in Number and Impact



Disasters are Increasing in Number and Impact

Total Disasters per Year in MD

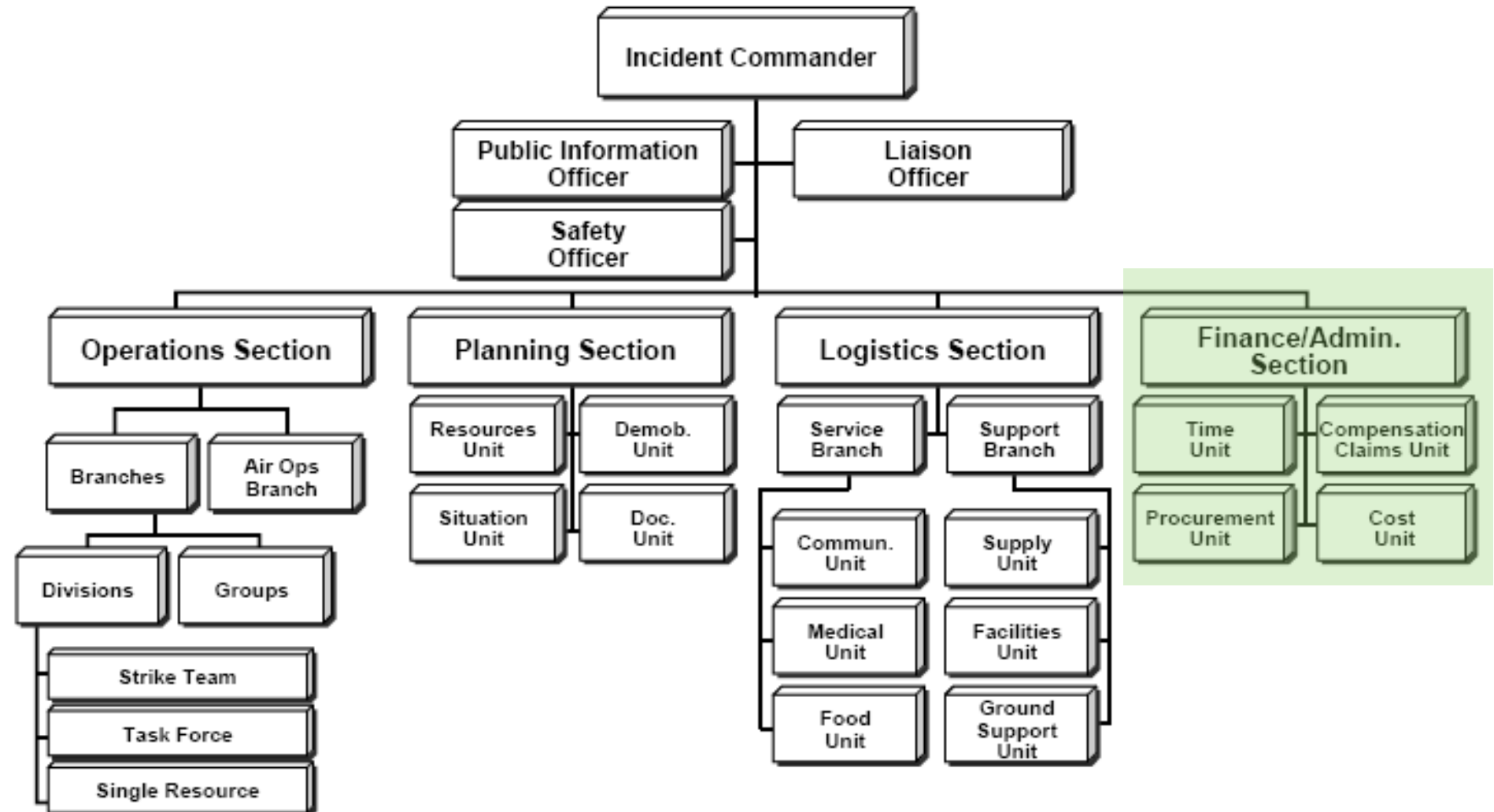


Cost Tracking Best Practices

- Assign a job or other code to all time, purchases, and other activities related to the emergency
- Designate a point-person for gathering this information and for answering employee questions on how to appropriately code
- Ensure all employees are documenting and retaining documentation related to their activities

Engage with Incident Command and/or Emergency Management

Incident Command System (ICS)



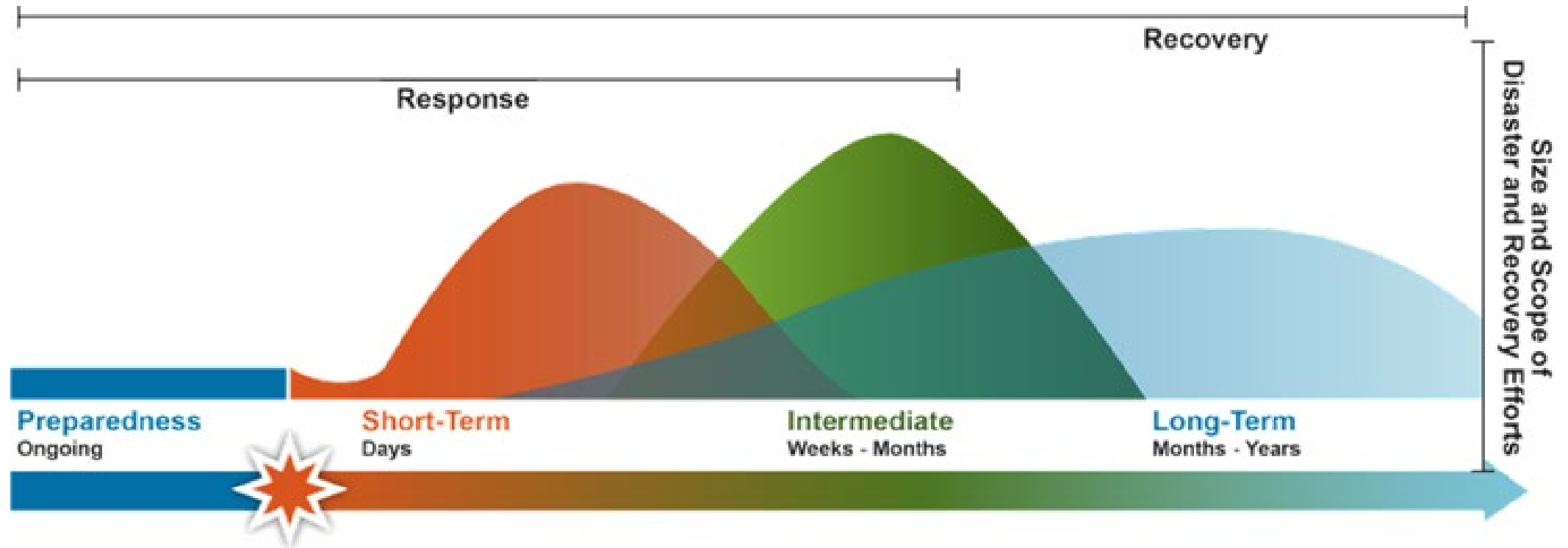
Early Active Engagement by Finance in Incident Command Helps Maximize Recovery

- Incident Command System (ICS) is the way your county manages emergencies
- ICS includes a Finance Branch that is:
 - Responsible for financial, administrative and cost analysis aspects of an emergency
 - Maintains contact with agency administrative and finance staff during response
 - Provides advice to the Incident Commander on financial matters

Engaging with Incident Command Helps Support...

- County or agency communications on the impact of an emergency to the public, State and Federal Officials
- May support or inform the Governor's request letter to the President seeking a disaster declaration
- Ensures financial managers are aware of the costs being incurred and the reasoning for expenditures to respond to the disaster
- Ensures your agency or county is thinking ahead towards the next phase of emergency response - recovery

Disaster Recovery



**Avoid a second
disaster...**

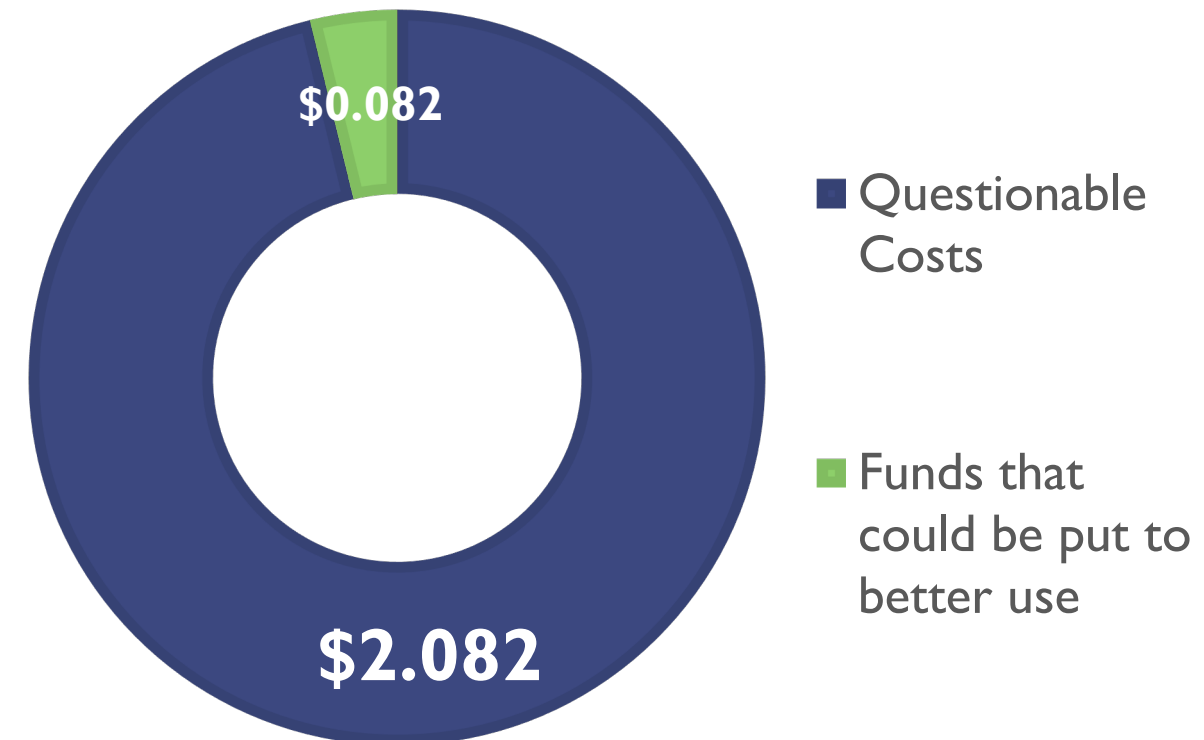
Avoid a Second Disaster



\$2.082¹ Billion in Disaster Funds Subject to Potential Deobligation

- Non-compliant contracting practices
- Lack of supporting documentation

OIG IDENTIFIED COSTS (\$ IN BILLIONS)



¹ - <https://www.oig.dhs.gov/sites/default/files/assets/2018-09/OIG-18-75-Sep18.pdf>

A second disaster...

- Deobligation of funding
- Temporary withholding of cash payments
- Large amounts of recovery work not reimbursed
- Suspension or debarment proceedings
- Negative reputational consequences
- State/Federal investigations

Preventing a Second Disaster

- Ensure compliance with the most strict procurement regulations in force for the agency/jurisdiction
- Train people in finance offices on public assistance and other federal requirements like cost reasonableness
- Proactively engage early with any sub-recipients on documentation and compliance
- Consider outside assistance using allowable management costs

Questions?

